

# FULL DEMOGRAPHIC PROFILE

1990 - 2000 Census, 2007 Estimates & 2012 Projections

Calculated using Proportional Block Groups

Prepared For Parkes Development Group, LLC



Lat/Lon: 35.861673/-86.428923

April 2008

RF1

536 N Thompson Ln Murfreesboro, Tennessee		1.00 mi radius	3.00 mi radius	5.00 mi radius	10.00 mi radius
<b>POPULATION</b>	2007 Estimated Population	3,074	40,719	98,217	175,321
	2012 Projected Population	3,711	46,728	112,171	198,461
	2000 Census Population	2,111	30,989	75,552	136,858
	1990 Census Population	1,340	23,277	53,752	93,382
	Historical Annual Growth 1990 to 2007	7.6%	4.4%	4.9%	5.2%
	Projected Annual Growth 2007 to 2012	4.1%	3.0%	2.8%	2.6%
<b>HOUSEHOLDS</b>	2007 Est. Households	1,175	16,846	39,827	68,847
	2012 Proj. Households	1,446	19,700	46,632	79,855
	2000 Census Households	765	12,136	28,621	50,335
	1990 Census Households	468	9,135	19,900	33,354
	Historical Annual Growth 1990 to 2007	8.9%	5.0%	5.9%	6.3%
	Projected Annual Growth 2007 to 2012	4.6%	3.4%	3.4%	3.2%
<b>AGE</b>	2007 Est. Population 0 to 9 Years	15.3%	12.8%	12.3%	13.2%
	2007 Est. Population 10 to 19 Years	13.6%	12.8%	13.7%	13.7%
	2007 Est. Population 20 to 29 Years	14.8%	17.1%	21.4%	18.2%
	2007 Est. Population 30 to 44 Years	26.6%	22.9%	21.6%	23.3%
	2007 Est. Population 45 to 59 Years	19.5%	19.8%	17.7%	18.9%
	2007 Est. Population 60 to 74 Years	7.6%	9.6%	8.8%	8.9%
	2007 Est. Population 75 Years Plus	2.4%	5.1%	4.3%	3.8%
	2007 Est. Median Age	32.5	34.4	31.9	32.8
<b>MARITAL STATUS &amp; SEX</b>	2007 Est. Male Population	49.4%	49.6%	50.3%	50.2%
	2007 Est. Female Population	50.6%	50.4%	49.7%	49.8%
	2007 Est. Never Married	21.9%	27.0%	31.9%	27.4%
	2007 Est. Now Married	62.6%	51.6%	47.7%	53.0%
	2007 Est. Separated or Divorced	12.2%	16.0%	16.1%	15.4%
	2007 Est. Widowed	3.3%	5.4%	4.4%	4.2%
<b>INCOME</b>	2007 Est. HH Income \$200,000 or More	1.7%	2.3%	2.4%	2.3%
	2007 Est. HH Income \$150,000 to 199,999	2.2%	2.7%	2.6%	2.7%
	2007 Est. HH Income \$100,000 to 149,999	15.0%	12.3%	11.1%	12.0%
	2007 Est. HH Income \$75,000 to 99,999	17.5%	13.8%	13.1%	14.8%
	2007 Est. HH Income \$50,000 to 74,999	31.2%	23.0%	21.7%	23.4%
	2007 Est. HH Income \$35,000 to 49,999	13.8%	14.3%	14.0%	14.3%
	2007 Est. HH Income \$25,000 to 34,999	7.8%	9.8%	10.7%	9.8%
	2007 Est. HH Income \$15,000 to 24,999	6.4%	9.3%	10.4%	9.3%
	2007 Est. HH Income \$0 to 14,999	4.3%	12.5%	14.0%	11.3%
	2007 Est. Average Household Income	\$ 65,999	\$ 60,317	\$ 58,752	\$ 61,404
	2007 Est. Median HH Income	\$ 62,821	\$ 54,478	\$ 50,937	\$ 54,670
	2007 Est. Per Capita Income	\$ 25,377	\$ 25,757	\$ 24,728	\$ 24,709
	2007 Est. Number of Businesses	102	2,707	4,135	5,699
2007 Est. Total Number of Employees	1,002	30,258	47,158	65,037	

This report was produced using data from private and government sources deemed to be reliable. The information herein is provided without representation or warranty.

# FULL DEMOGRAPHIC PROFILE

1990 - 2000 Census, 2007 Estimates & 2012 Projections

Calculated using Proportional Block Groups

Prepared For Parkes Development Group, LLC



Lat/Lon: 35.861673/-86.428923

April 2008

RF1

536 N Thompson Ln Murfreesboro, Tennessee		1.00 mi radius	3.00 mi radius	5.00 mi radius	10.00 mi radius
<b>RACE</b>	2007 Est. White Population	79.8%	77.2%	76.1%	78.9%
	2007 Est. Black Population	9.6%	12.1%	13.5%	11.6%
	2007 Est. Asian & Pacific Islander	5.6%	3.8%	3.5%	3.3%
	2007 Est. American Indian & Alaska Native	0.1%	0.1%	0.1%	0.1%
	2007 Est. Other Races Population	5.0%	6.8%	6.8%	6.1%
<b>HISPANIC</b>	2007 Est. Hispanic Population	112	2,530	6,213	9,455
	2007 Est. Hispanic Population Percent	3.7%	6.2%	6.3%	5.4%
	2012 Proj. Hispanic Population Percent	4.5%	7.5%	7.7%	6.6%
	2000 Hispanic Population Percent	1.9%	3.3%	3.3%	2.8%
<b>EDUCATION (Adults 25 or Older)</b>	2007 Est. Adult Population (25 Years or Older)	2,009	26,954	60,732	111,516
	2007 Est. Elementary (0 to 8)	1.8%	3.5%	3.4%	3.4%
	2007 Est. Some High School (9 to 11)	4.4%	5.6%	5.8%	6.7%
	2007 Est. High School Graduate (12)	31.3%	30.5%	30.5%	34.7%
	2007 Est. Some College (13 to 16)	20.1%	18.6%	19.5%	18.5%
	2007 Est. Associate Degree Only	8.0%	6.3%	5.8%	5.9%
	2007 Est. Bachelor Degree Only	24.3%	23.5%	23.5%	21.2%
	2007 Est. Graduate Degree	10.0%	12.1%	11.5%	9.8%
<b>HOUSING</b>	2007 Est. Total Housing Units	1,277	18,222	43,388	74,099
	2007 Est. Owner Occupied Percent	68.3%	53.4%	48.8%	58.6%
	2007 Est. Renter Occupied Percent	23.7%	39.0%	43.0%	34.3%
	2007 Est. Vacant Housing Percent	8.0%	7.6%	8.2%	7.1%
<b>HOMES BUILT BY YEAR</b>	2000 Homes Built 1999 to 2000	7.5%	3.5%	5.5%	5.7%
	2000 Homes Built 1995 to 1998	19.6%	12.0%	16.0%	18.2%
	2000 Homes Built 1990 to 1994	16.7%	12.2%	12.3%	13.5%
	2000 Homes Built 1980 to 1989	30.9%	26.4%	23.5%	23.8%
	2000 Homes Built 1970 to 1979	10.9%	15.3%	16.9%	16.9%
	2000 Homes Built 1960 to 1969	5.6%	10.5%	11.3%	9.6%
	2000 Homes Built 1950 to 1959	5.3%	9.7%	7.4%	6.3%
	2000 Homes Built Before 1949	3.5%	10.4%	6.9%	6.0%
<b>HOME VALUES</b>	2000 Home Value \$1,000,000 or More	0.2%	0.1%	0.1%	0.1%
	2000 Home Value \$500,000 to \$999,999	-	0.2%	0.3%	0.2%
	2000 Home Value \$400,000 to \$499,999	-	0.2%	0.3%	0.2%
	2000 Home Value \$300,000 to \$399,999	0.9%	2.4%	2.2%	1.5%
	2000 Home Value \$200,000 to \$299,999	3.1%	6.8%	7.6%	6.4%
	2000 Home Value \$150,000 to \$199,999	11.6%	15.5%	15.9%	15.0%
	2000 Home Value \$100,000 to \$149,999	56.0%	44.5%	40.0%	39.9%
	2000 Home Value \$50,000 to \$99,999	27.5%	28.2%	32.0%	35.0%
	2000 Home Value \$25,000 to \$49,999	0.5%	1.7%	1.3%	1.3%
	2000 Home Value \$0 to \$24,999	0.2%	0.4%	0.4%	0.3%
	2000 Median Home Value	\$ 114,830	\$ 120,597	\$ 119,501	\$ 116,761
	2000 Median Rent	\$ 547	\$ 447	\$ 501	\$ 513

This report was produced using data from private and government sources deemed to be reliable. The information herein is provided without representation or warranty.

# FULL DEMOGRAPHIC PROFILE

1990 - 2000 Census, 2007 Estimates & 2012 Projections

Calculated using Proportional Block Groups

Prepared For Parkes Development Group, LLC



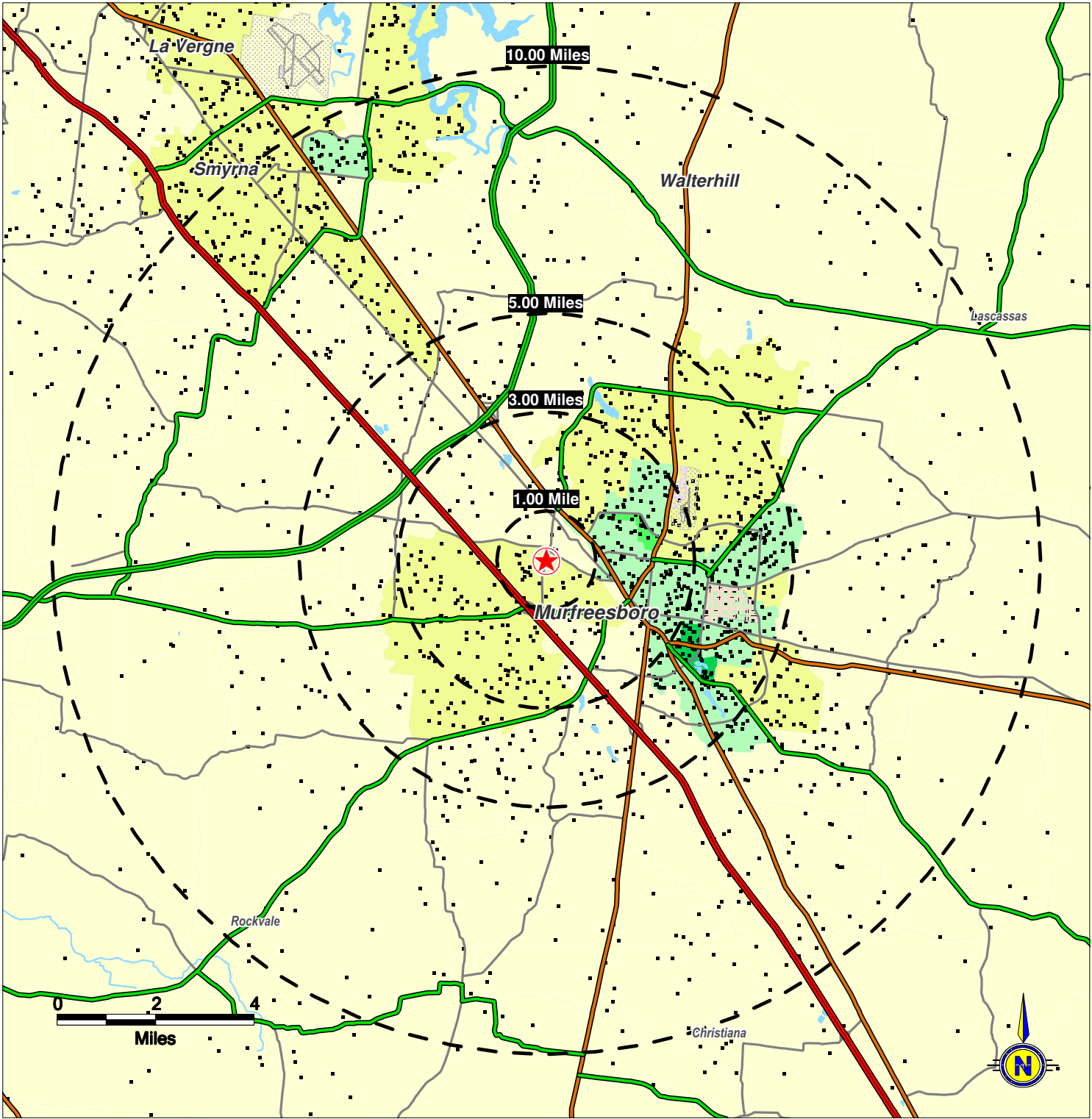
Lat/Lon: 35.861673/-86.428923

April 2008

RF1

536 N Thompson Ln Murfreesboro, Tennessee		1.00 mi radius	3.00 mi radius	5.00 mi radius	10.00 mi radius
<b>LABOR FORCE</b>	2007 Est. Labor: Population Age 16+	2,335	32,343	78,726	138,111
	2007 Est. Civilian Employed	72.5%	66.0%	65.8%	67.3%
	2007 Est. Civilian Unemployed	3.0%	3.3%	5.4%	4.4%
	2007 Est. in Armed Forces	0.1%	0.1%	0.1%	0.1%
	2007 Est. not in Labor Force	24.4%	30.6%	28.8%	28.2%
	2007 Labor Force: Males	49.1%	49.2%	50.0%	50.0%
	2007 Labor Force: Females	50.9%	50.8%	50.0%	50.0%
<b>OCCUPATION</b>	2000 Occupation: Population Age 16+	1,146	15,913	39,346	71,587
	2000 Mgmt, Business, & Financial Operations	16.4%	15.2%	13.7%	13.3%
	2000 Professional and Related	21.8%	21.5%	19.7%	18.1%
	2000 Service	9.5%	12.3%	14.2%	13.3%
	2000 Sales and Office	26.9%	26.5%	27.8%	27.7%
	2000 Farming, Fishing, and Forestry	0.3%	0.2%	0.2%	0.2%
	2000 Construction, Extraction, & Maintenance	7.9%	8.9%	8.6%	9.7%
	2000 Production, Transport, & Material Moving	17.2%	15.4%	15.8%	17.7%
	2000 Percent White Collar Workers	65.2%	63.2%	61.2%	59.1%
2000 Percent Blue Collar Workers	34.8%	36.8%	38.8%	40.9%	
<b>TRANSPORTATION TO WORK</b>	2000 Drive to Work Alone	84.2%	81.2%	81.9%	82.9%
	2000 Drive to Work in Carpool	11.8%	12.9%	12.5%	12.5%
	2000 Travel to Work by Public Transportation	0.6%	0.6%	0.3%	0.3%
	2000 Drive to Work on Motorcycle	-	0.1%	0.1%	0.1%
	2000 Walk or Bicycle to Work	0.9%	1.2%	2.0%	1.3%
	2000 Other Means	0.3%	1.1%	0.7%	0.5%
	2000 Work at Home	2.2%	2.8%	2.5%	2.5%
	<b>TRAVEL TIME</b>				
2000 Travel to Work in 14 Minutes or Less	26.4%	35.3%	35.4%	29.2%	
2000 Travel to Work in 15 to 29 Minutes	34.9%	30.7%	30.4%	32.9%	
2000 Travel to Work in 30 to 59 Minutes	30.9%	26.8%	27.1%	30.6%	
2000 Travel to Work in 60 Minutes or More	7.8%	7.1%	7.2%	7.3%	
2000 Average Travel Time to Work	26.1	23.7	23.5	24.8	
<b>CONSUMER EXPENDITURE</b>	2007 Est. Total Household Expenditure (in Millions)	\$ 62.1	\$ 832.6	\$ 1,934.0	\$ 3,452.0
	2007 Est. Apparel	\$ 3.0	\$ 39.8	\$ 92.5	\$ 164.9
	2007 Est. Contributions & Gifts	\$ 3.8	\$ 51.3	\$ 118.7	\$ 211.7
	2007 Est. Education & Reading	\$ 1.6	\$ 22.2	\$ 51.5	\$ 91.1
	2007 Est. Entertainment	\$ 3.5	\$ 46.4	\$ 107.6	\$ 192.6
	2007 Est. Food, Beverages & Tobacco	\$ 10.0	\$ 134.0	\$ 312.3	\$ 555.7
	2007 Est. Furnishings And Equipment	\$ 2.7	\$ 36.3	\$ 83.9	\$ 150.7
	2007 Est. Health Care & Insurance	\$ 4.4	\$ 59.6	\$ 139.1	\$ 247.1
	2007 Est. Household Operations & Shelter & Utilities	\$ 18.5	\$ 248.1	\$ 576.1	\$ 1,027.7
	2007 Est. Miscellaneous Expenses	\$ 1.0	\$ 14.0	\$ 32.7	\$ 58.1
	2007 Est. Personal Care	\$ 0.9	\$ 12.1	\$ 28.2	\$ 50.2
	2007 Est. Transportation	\$ 12.8	\$ 168.8	\$ 391.6	\$ 702.2

This report was produced using data from private and government sources deemed to be reliable. The information herein is provided without representation or warranty.



©2008, SITES USA Inc., Chandler, AZ (480) 491-1112. All Rights Reserved.

**Population Density**

One Dot = 100 Persons

**Population Density  
By Block Groups**

- 7,500 or More
- 5,000 to 7,500
- 2,500 to 5,000
- 1,000 to 2,500
- Less than 1,000

**536 N Thompson Ln  
Murfreesboro, Tennessee**

*Current Year Estimated  
Persons per Square Mile*

*June 2008*

*Prepared For Parkes Development Group*

